

Installation manual

of MP3 player module for SAAB 9-5 with AUX IN

MP3 module for SAAB 9-5 original stereo is a set of hardware and software specially designed for SAAB 9-5 (1998-2005) by replacing old Tape module with new MP3 music player. Music can be played from SD card, USB stick or Aux in (e.g. phone, etc.). MP3 player is controlled over steering wheel buttons and SID buttons. As an option it is possible to order IR remote control option. MP3 player fits to SAAB 9-5 model years 1998-2005 without navigation and with Tape module.

NB! Wherever possible we recommend to order installation from manufacturer, please contact with info@ittgroup.ee or by phone +3726566614 for more information. Following this manual is in your own risk and ITT Group is not taking any responsibilities of damage your unit or even car data communication system.



Document version 1.0

Date 02/2106

ITT Group

Akadeemia tee 21, Tallinn, Estonia

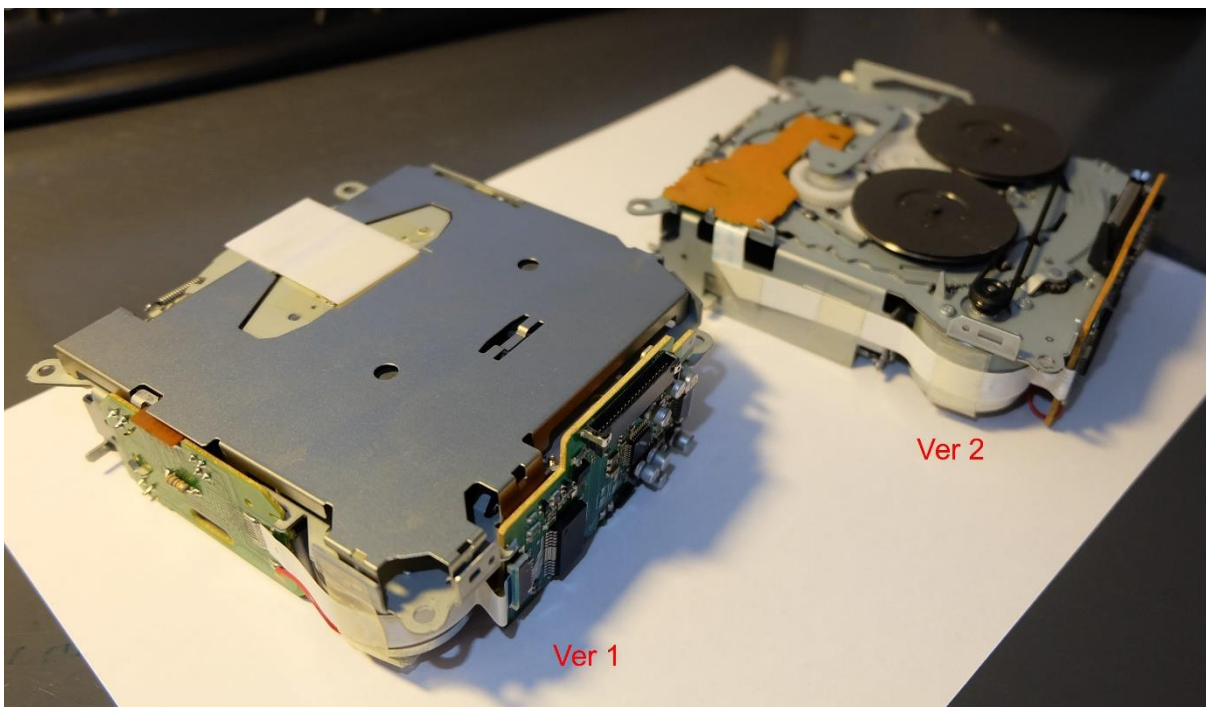
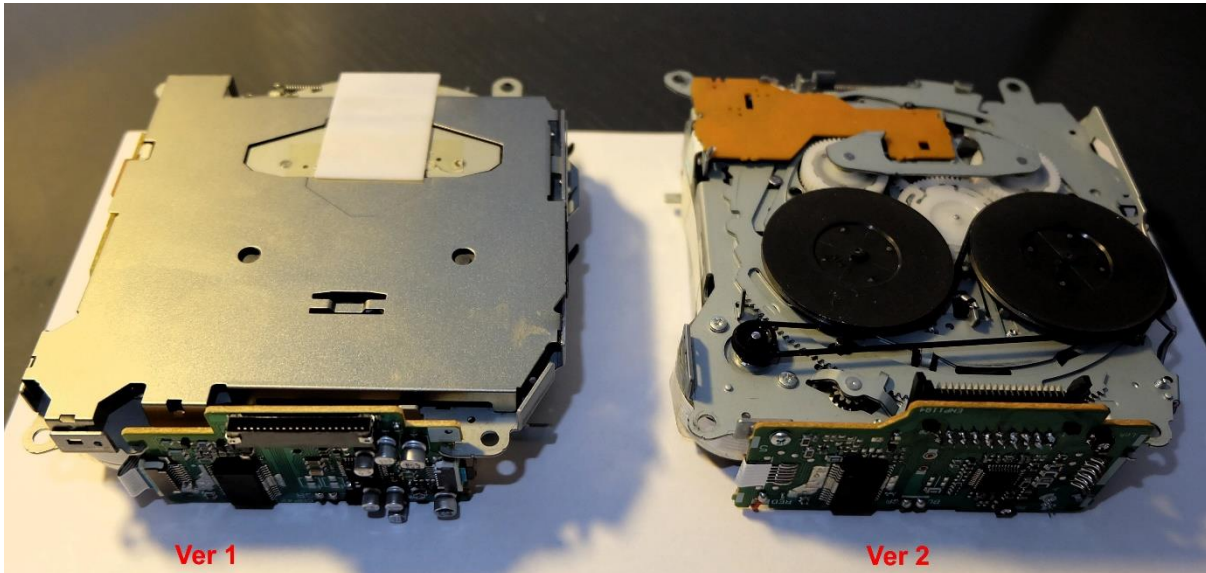
+3725163560, info@ittgroup.ee

Video guide is available in youtube channel: www.youtube.com/ittgrouptallinn

STEP 1. Identify TAPE version and unsolder main connector plug

Before the installation (and order) one must identify the TAPE version fitted into STEREO unit. Older versions (Ver 1) have different signal logic and tape connector compared with newer version (Ver 2). According to the version different TAPE simulator software is needed for controller. This information have to be sent to manufacturer before product can be sent out to customer.

Images below help to identify the TAPE version inside the STEREO unit.



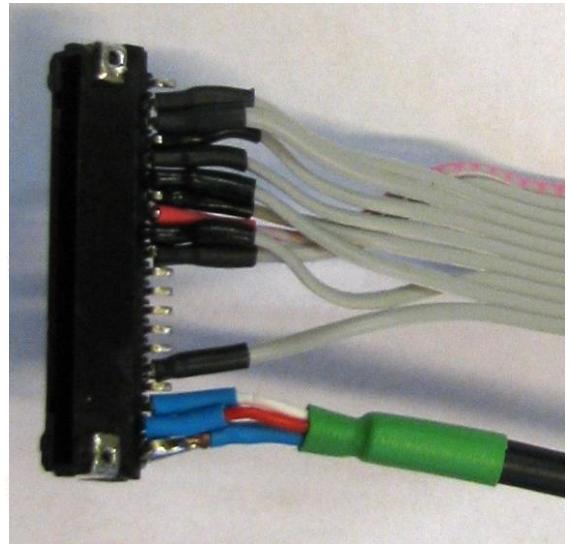
After removing TAPE player unsolder the main connector on the deck board. TAPE player itself is not needed anymore.

STEP 2. Solder TAPE Simulator cable

Solder the ribbon cable to the connector using the following table (Heat-shrinkable tubs are included):

Ver 1 (older version)

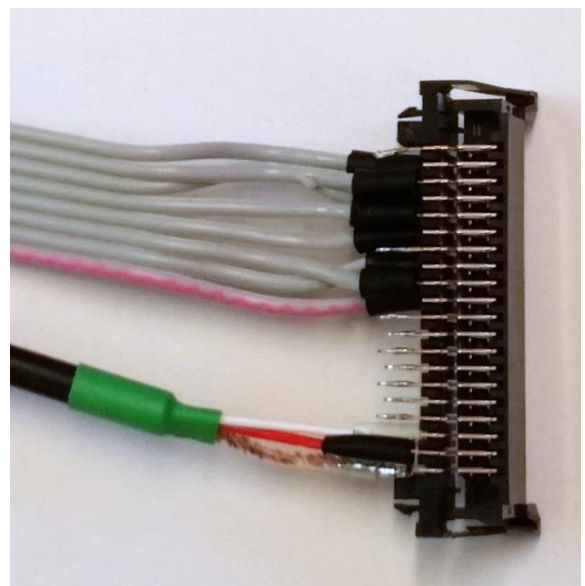
Connector	Ribbon cable	Notes
1		
2	3	
3	4	
4	5	
5	6	
6	9	
7	7	
8	1	
9	8	
10	2	Extra pull-up
11		
12		
13		
14		
15		
16	10	Resistor
17		
18	CH1	
19	CH2	
20	Audio GND	



The red wire is the number one. It should be soldered to the connector pin 8 (Ver 1) and pin 10

Ver 2 (newer version)

1		
2	8	
3	7	
4	6	
5	5	
6	4	
7		
8	2	
9	3	
10	1	
11		
12		
13		
14		
15		
16		
17		
18	CH1	
19	CH2	
20	Audio GND	

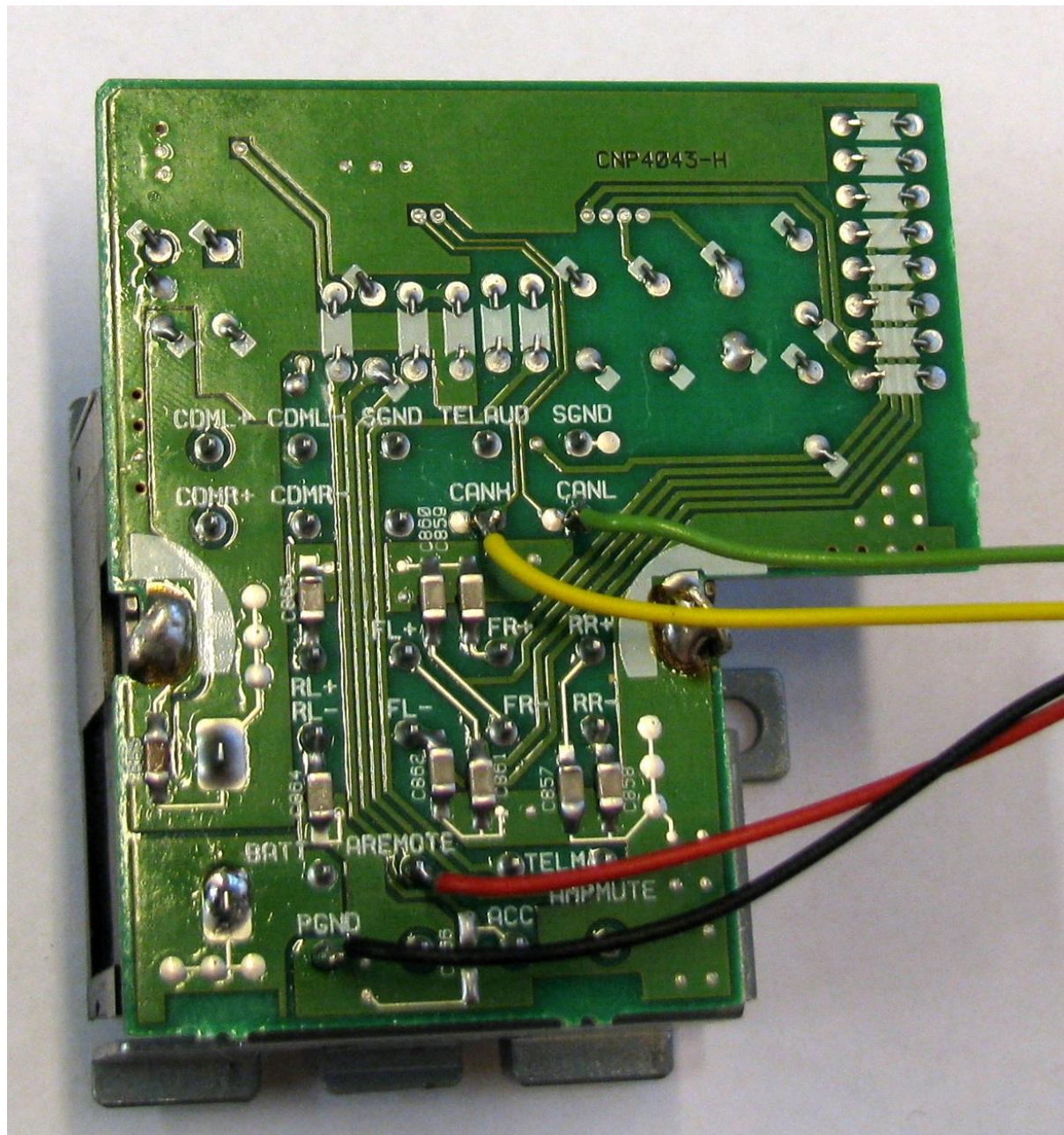


STEP 3 Solder CAN and power cables

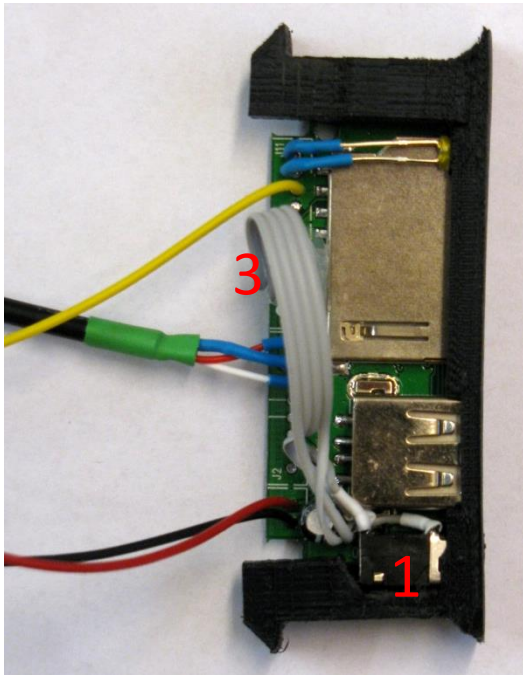
Power is taken from remote antenna output. Power and CAN wires are soldered to the main STEREO connector board on the back side of unit.

CAN H is yellow wire

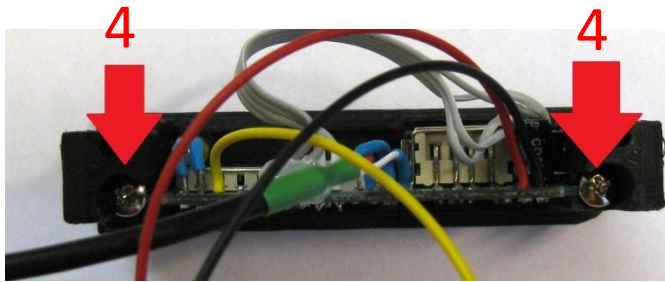
CAN L is green wire



STEP 4 Install the MP3 player head unit



1. Insert the audio input AUX IN connector to its slot.
2. Put the plastic holder in the cassette slot.
3. Then insert carefully the MP3 player PCB.
4. Install two screws to secure board.



STEP 5 Connect simulator plug and install the controller board

Insert the connector to its socket. Audio cable is located in control panel (head unit buttons) side

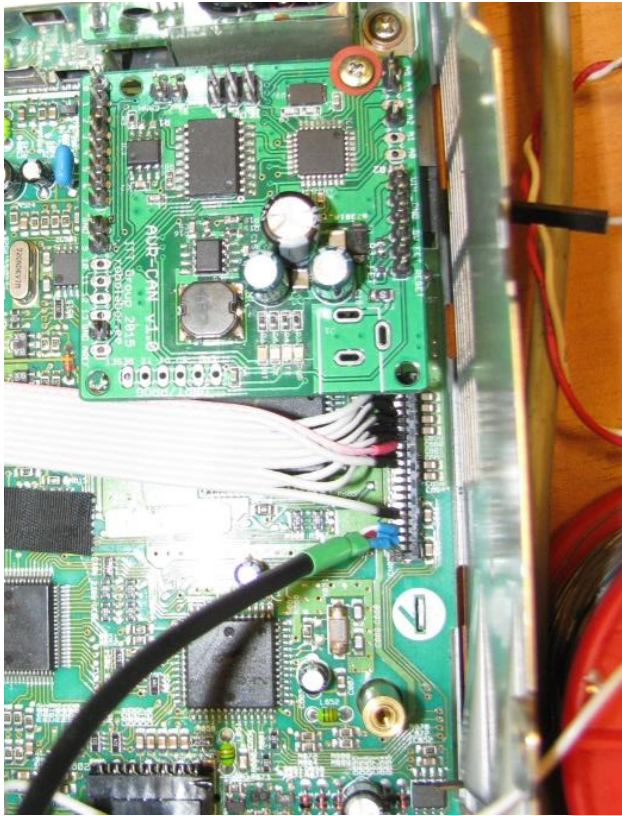


Ver 1

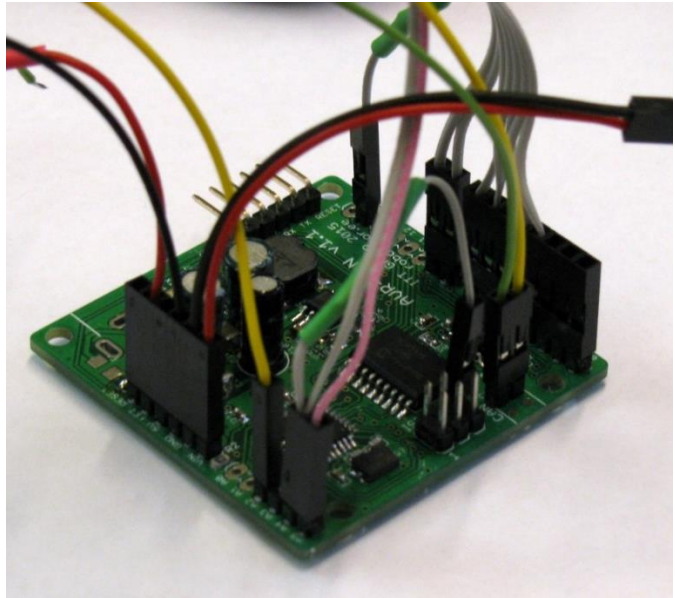
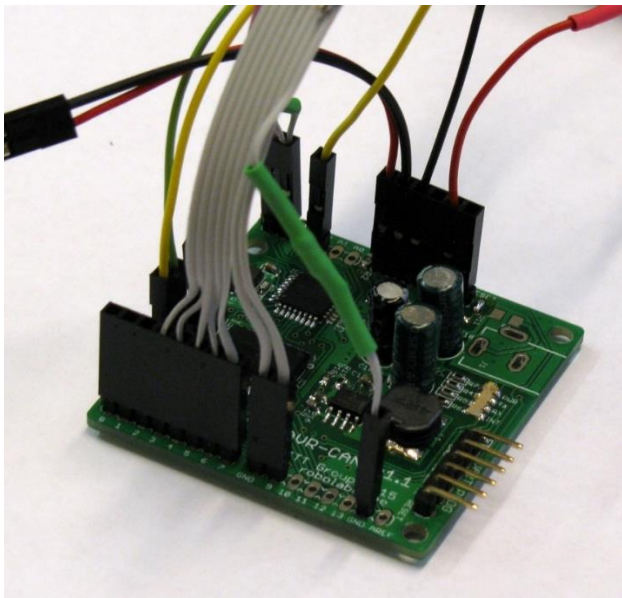


Ver 2

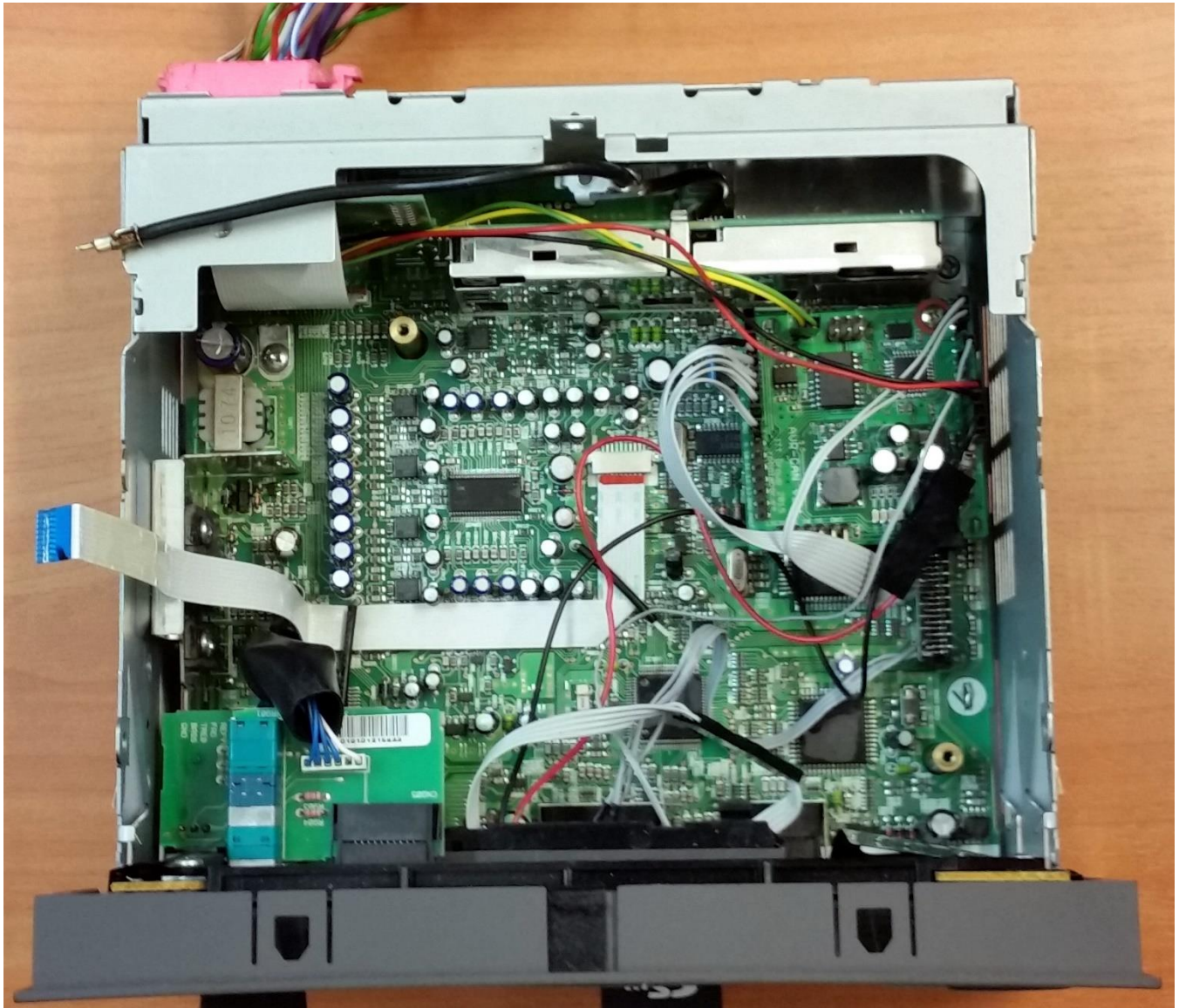
2. Screw the controller board in place, using included washer



STEP 6 Connect all wires to controller board



STEP 7 Assemble the STEREO unit and test player



Follow the User manual for testing installation (separate document)

See user tutorial and unit functionality in www.youtube.com/ittgrouptallinn