

Installation manual

MP3 player module for SAAB 9-5 with AUX IN

MP3 player module for SAAB 9-5 original stereo is a set of hardware and software specially designed for SAAB 9-5 (1998-2005) by replacing old Tape module with new MP3 music player. Music can be played from SD card, USB stick or Aux in (e.g. phone, etc.). MP3 player is controlled over steering wheel buttons and SID buttons. As an option it is possible to order IR remote control option. MP3 player fits into SAAB 9-5 model years 1998-2005 without navigation and with Tape module original stereo.

NB! Wherever possible we recommend to order installation from manufacturer, please contact with info@ittgroup.ee or by phone +3726566614 for more information. Following this manual is in your own risk and ITT Group is not taking any responsibilities of damage your unit or even car data communication system.



Document version 1.1

Date 09/2106

ITT Group

Akadeemia tee 21, Tallinn, Estonia

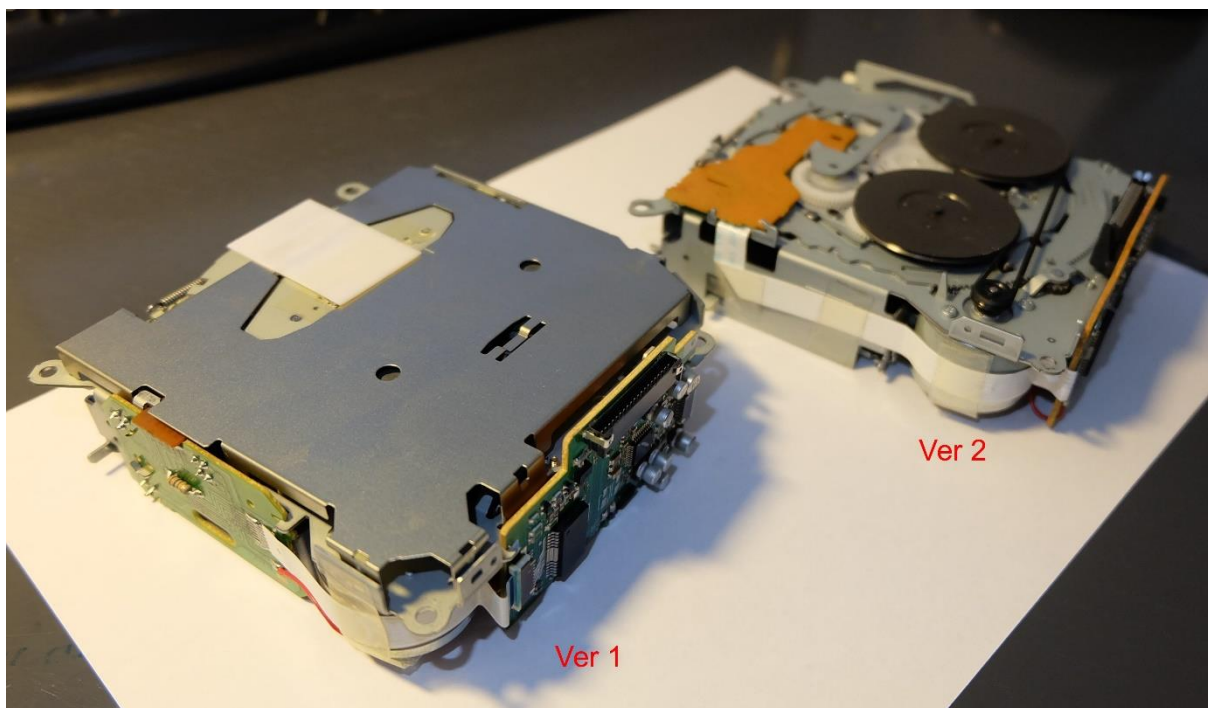
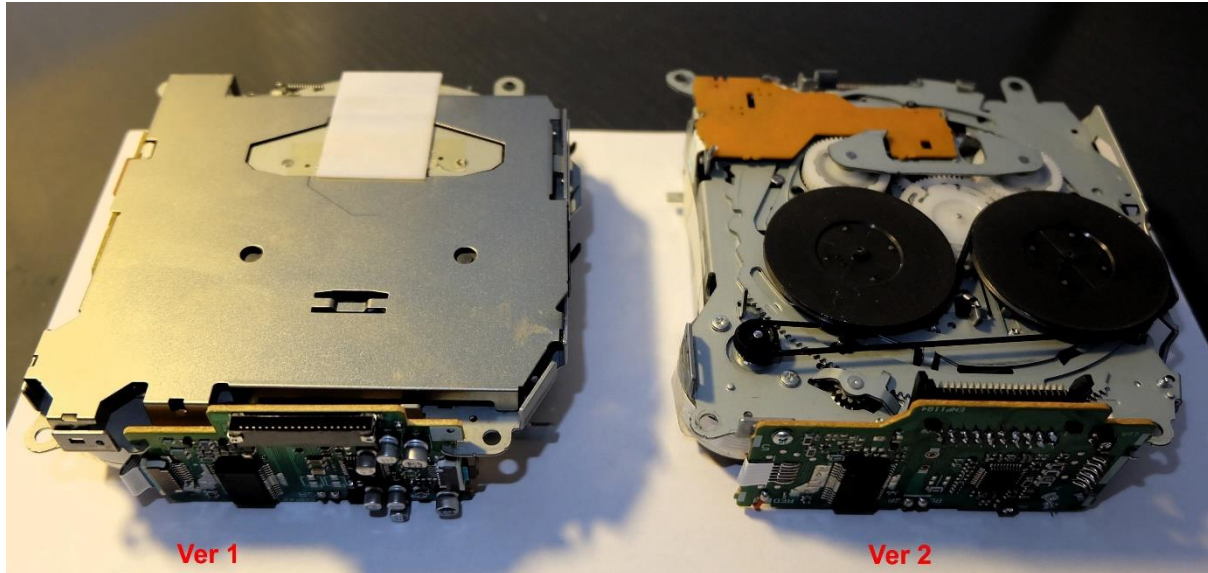
+3725163560, info@ittgroup.ee

Video guide is available in youtube channel: www.youtube.com/ittgrouptallinn

STEP 1. Identify TAPE version and unsolder main connector plug

Before installation the TAPE version fitted into STEREO unit should be identified. Older versions usually on MY 1998-2002 (Ver 1) have different signal logic and tape connector compared with newer version, usually on MY 2002-2005 (Ver 2). According to the version user should set jumper on controller board (see later).

Images below help to identify the TAPE version inside the STEREO unit. Pay attention to the connector location.

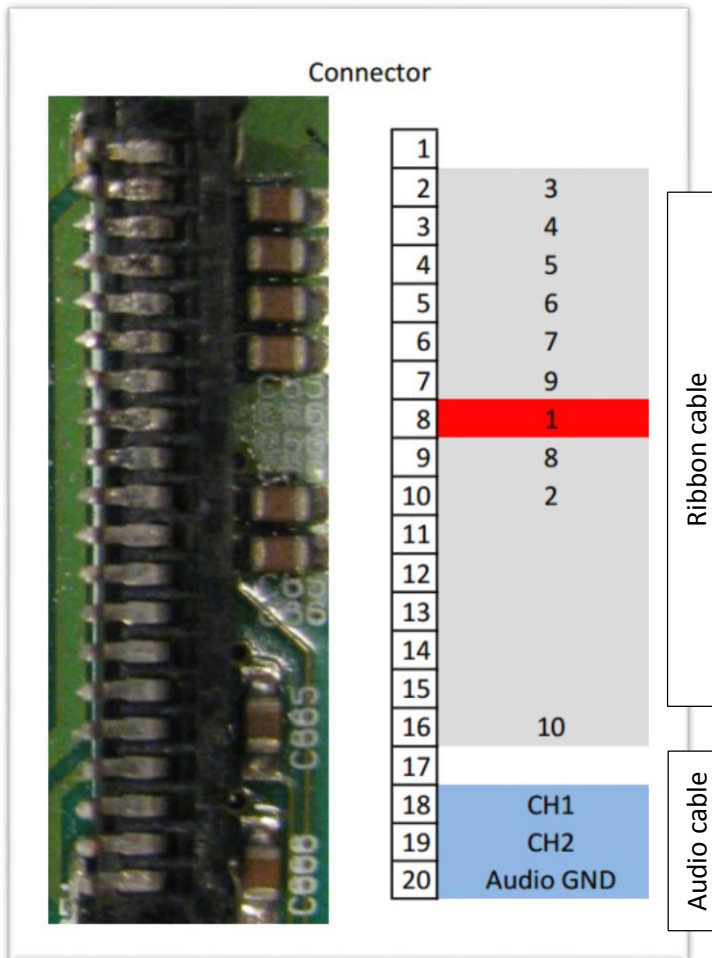


After removing TAPE player unsolder the main connector on the deck board. TAPE player itself is not needed anymore. Hot air blower with small nozzle is a good tool for unsoldering the main connector

STEP 2. Solder TAPE Simulator cable

Solder the ribbon and audio cable to the connector (heat-shrinkable isolators are included).
See connection tables below.

Ver 1 (older version)

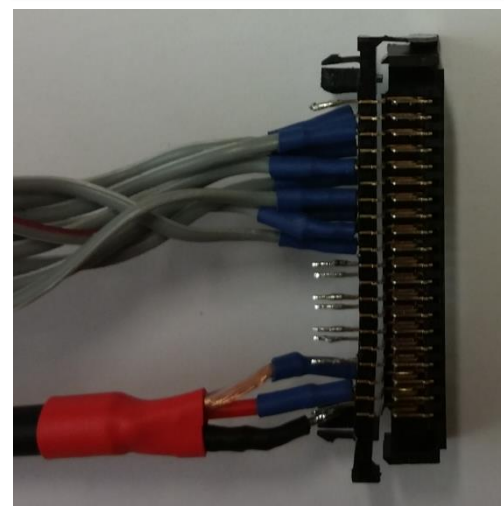
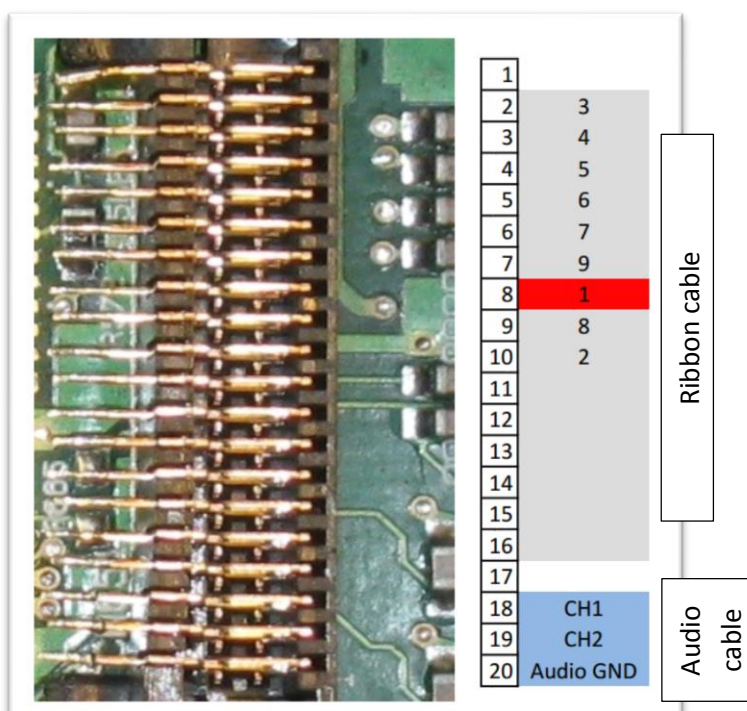


The red wire is number one.
It should be soldered to the connector pin 8 (Ver 1 and 2).

Audio cable:

- Black – audio GND
- White – CH1
- Red – CH2

Ver 2 (newer version)

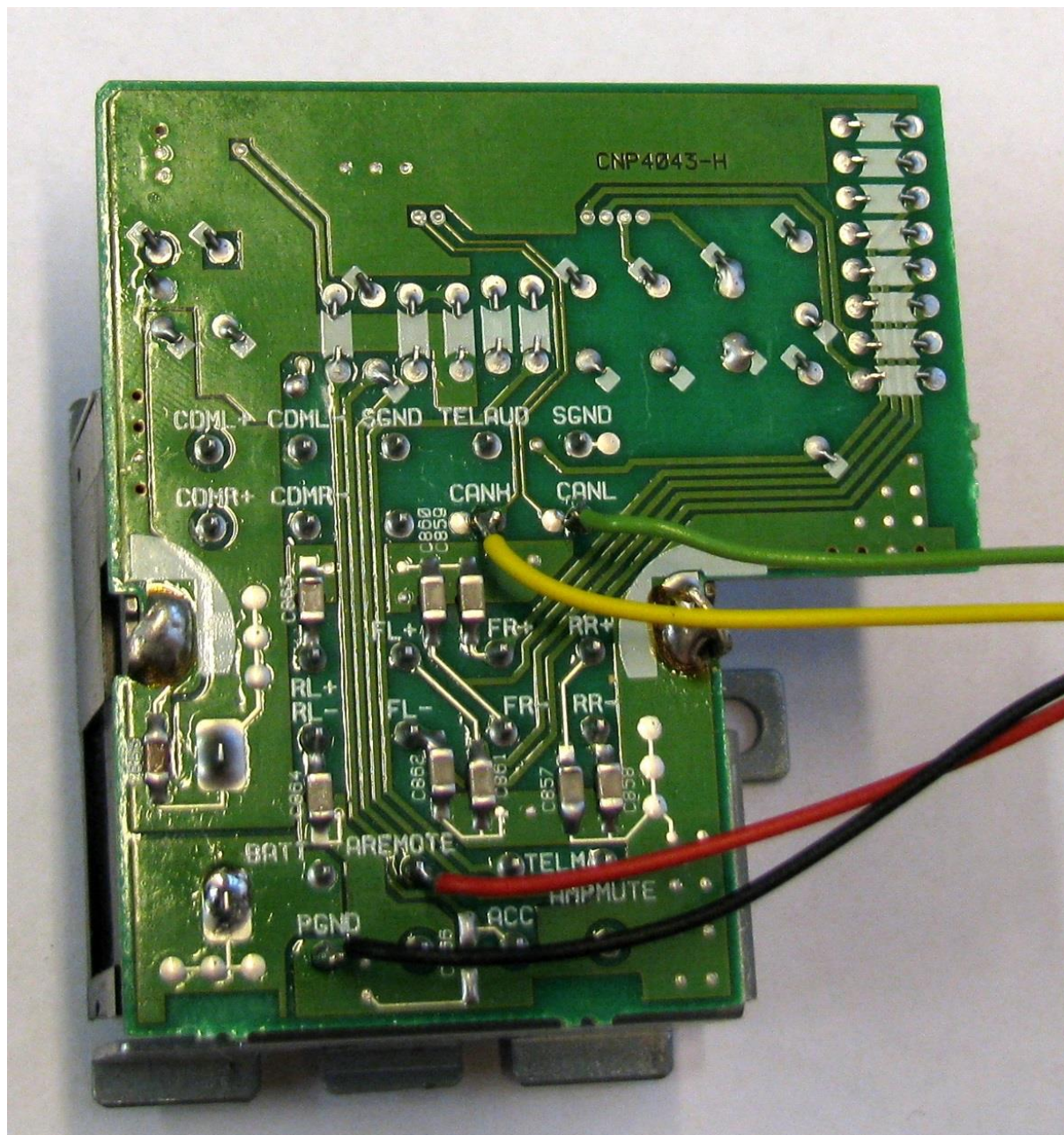


Note: A 10th wire is not needed for this version and it may be removed.

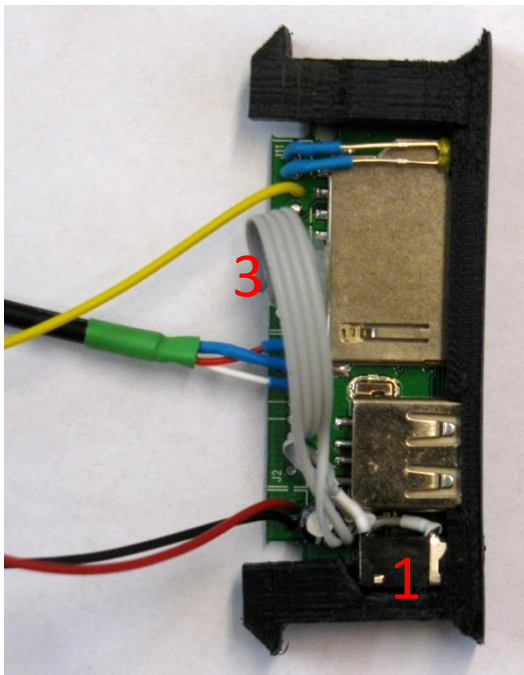
STEP 3 Solder CAN and power cables

Power is taken from remote antenna output. Power and CAN wires are soldered to the main STEREO connector board on the back side of unit.

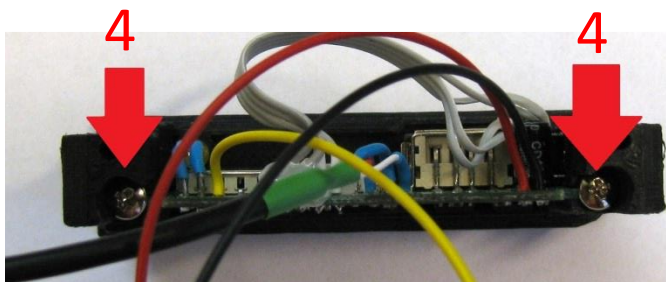
- CAN H is yellow wire
- CAN L is green wire



STEP 4 Install the MP3 player head unit

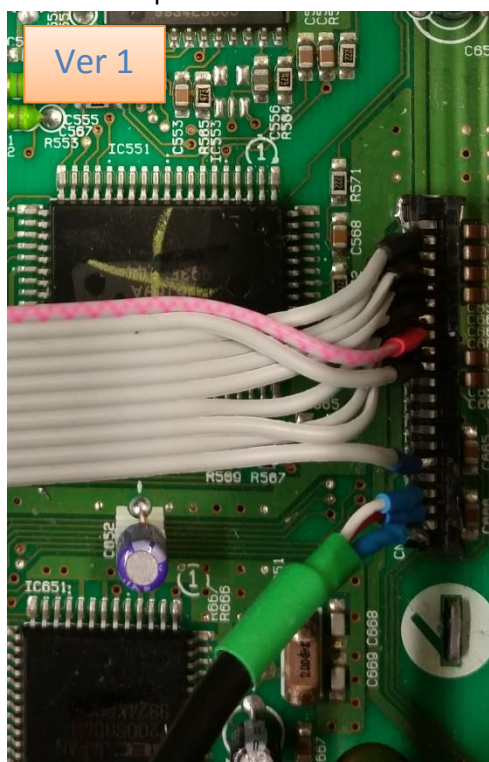


1. Insert the audio input AUX IN connector to its slot.
2. Put the plastic holder in the cassette slot.
3. Then insert carefully the MP3 player PCB.
4. Install two screws to secure board.

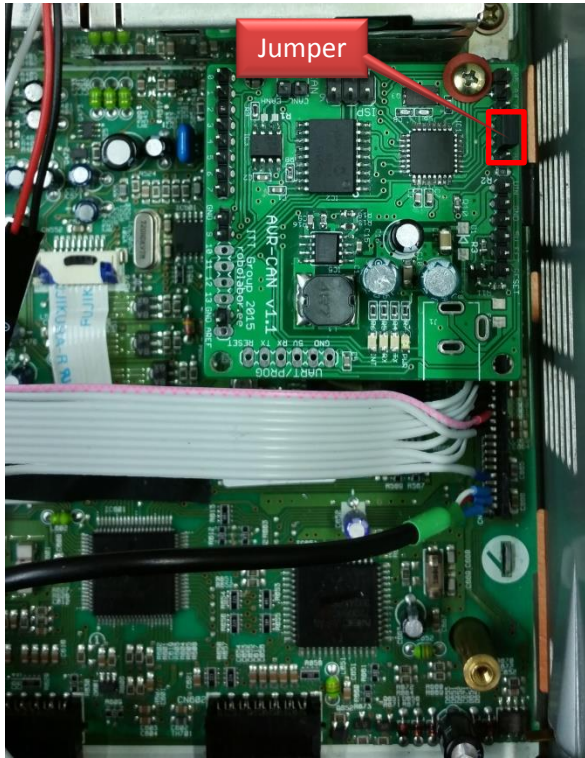


STEP 5 Connect simulator plug and install the controller board

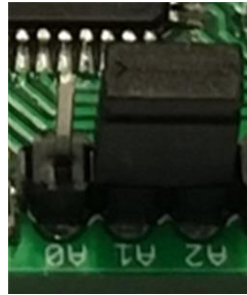
1. Insert the tape connector into its socket. Audio cable is located in control panel (head unit buttons) side.



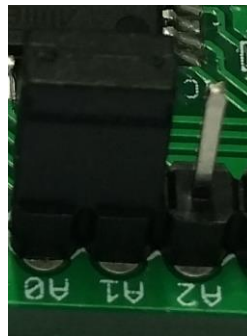
2. Screw the controller board in place, using included washer and one of the tape screws. Then select correct tape version.



Ver 1 (older version) A1-A2



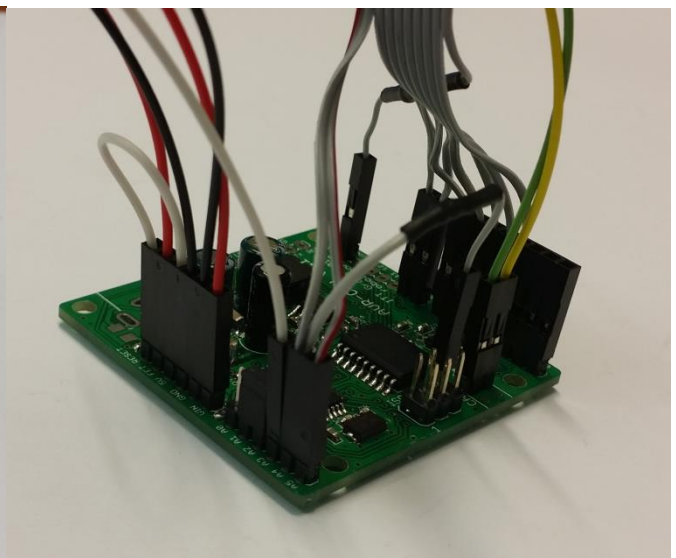
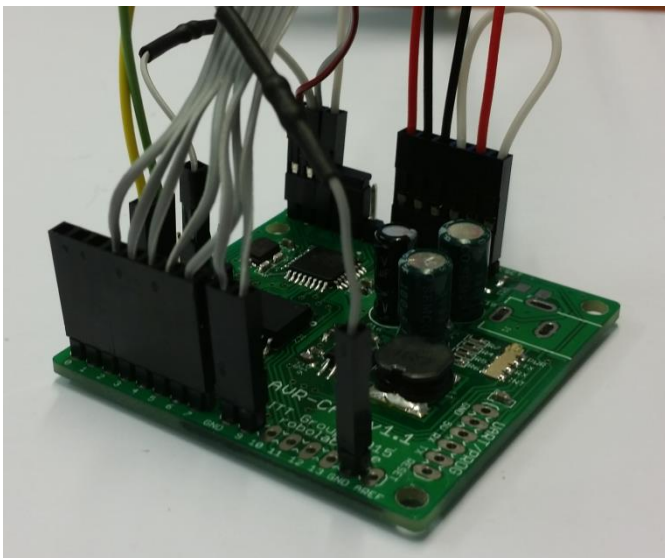
Ver 2 (newer version) A0-A1



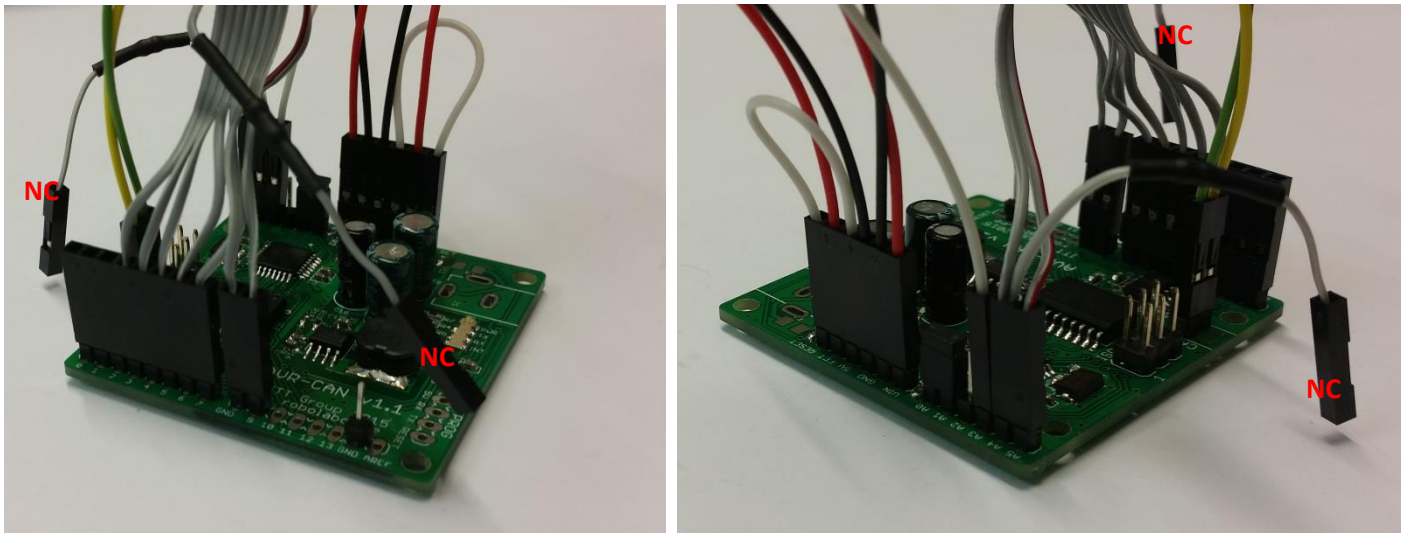
Note: If wrong tape version has accidentally selected, then a "Tape error" text appears on the SID.

STEP 6 Connect all wires to controller board

Ver 1 (older version)

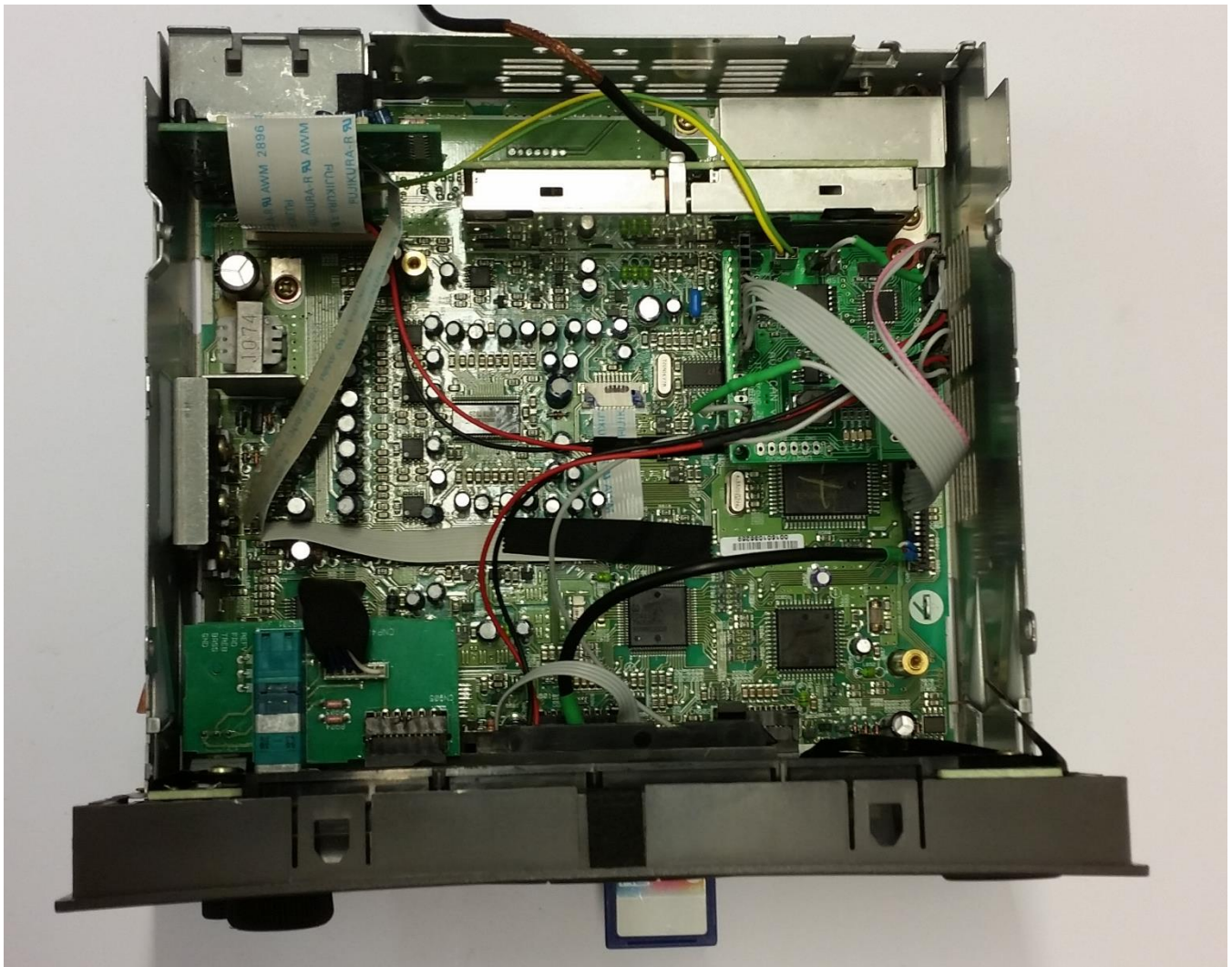


Ver 2 (newer version)



NC - Not connect

STEP 7 Assemble the STEREO unit and test player



Follow the User manual for testing installation (separate document)

See user tutorial and unit functionality in www.youtube.com/ittgrouptallinn